



262 Maitland Road Mayfield NSW

3 🚗

This newer building provides approx. 430sqm of space all on one level.

Located in the best part of the Commercial Centre, it includes an open plan work area, and partitioned offices and board rooms, with the flexibility to easily change the layout to suit any needs. Could also be converted to a showroom or open retail space.

It features:

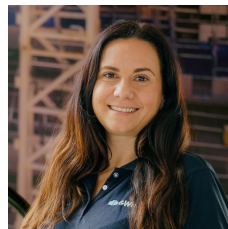
- Automatic front door with disability access
- On-site rear parking
- Kitchenette/staff room
- Amenities and store rooms
- 10m frontage provides high exposure

Previously used as a Real Estate office and Bank, it would suit multi-disciplinary medical services, professional offices or other retail.

Owner will consider a complimentary sub-tenancy such as coffeehouse, juice bar or lunch spot.

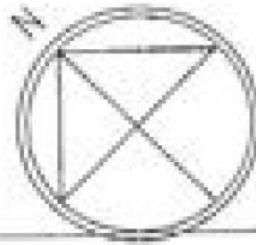
Available soon, phone today for an inspection.

Price : \$60,000 + GST + Outs pa
Building Size : 430 sqm
View : <https://www.gwh-re.com.au/lease/nsw/newcastle-region/mayfield/commercial/offices/6961832>

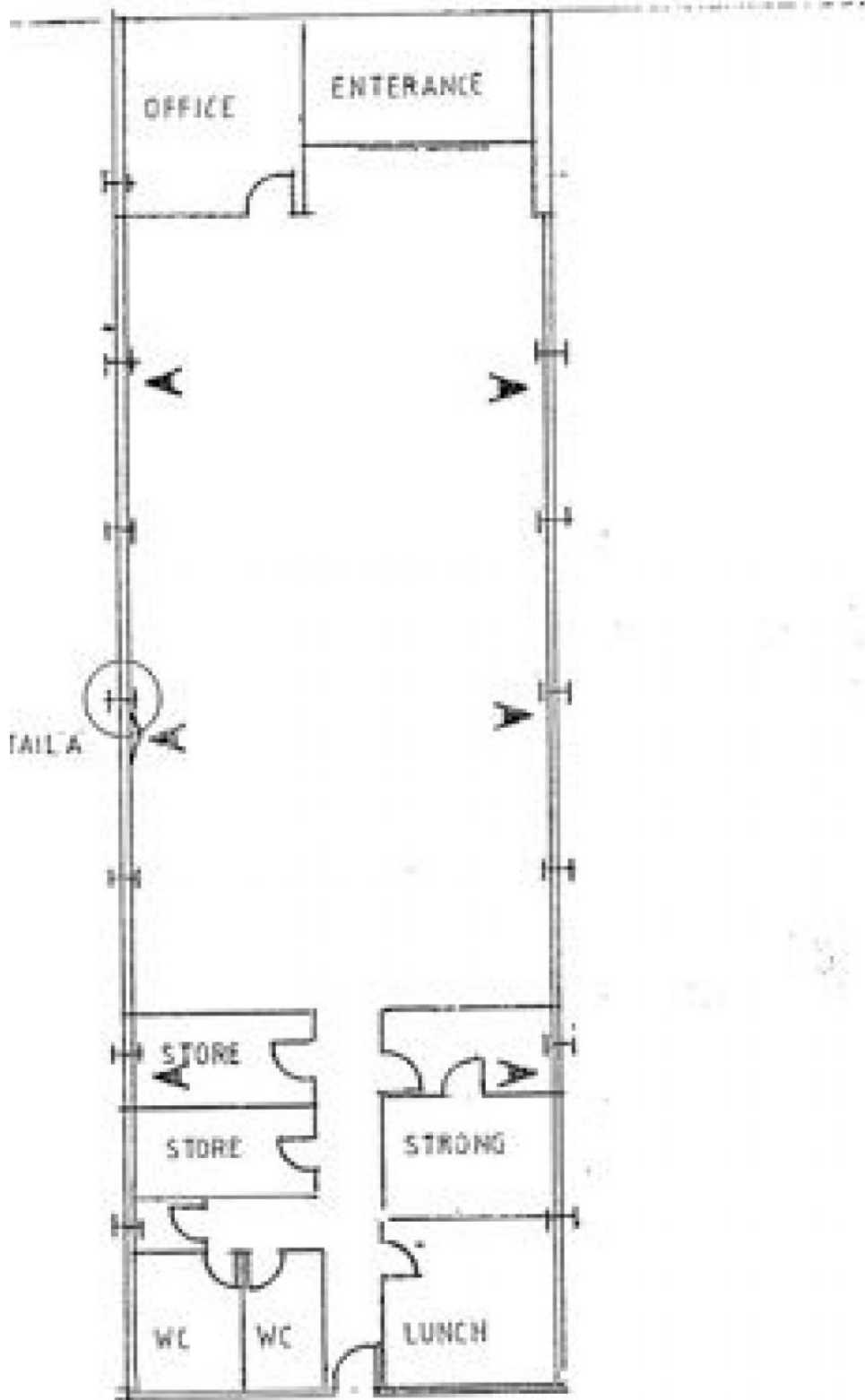


Katrina Karmas
02 4966 3766

MAITLAND ROAD



FOOTPATH



MAITLAND ROAD

