



### 205/1 National Park Street Newcastle NSW

3 🛏️ 2 🚿 2 🚗

Experience wholesome inner-city living packed with premium goodness to satisfy all the senses. Consciously designed for sustainability, liveability, wellness, and community, ONE is GWH's most significant development to date. Embraced by a glorious wraparound balcony, this spectacular apartment boasts three robed bedrooms, two modern bathrooms, internal laundry and space for a study nook. Enveloped by ceiling to floor windows, the outdoors seamlessly fuse with contemporary sun-drenched interiors through sliding doors to the bedrooms and living area, cleverly expanding the space that entertainers will love. Offering premium resort-style living and luxurious communal garden pockets to relax, reconnect and socialise in, this is your opportunity to invest in one of Newcastle's most exciting developments.

- ? Luxurious second-floor apartment with South West aspect in the new ONE Apartment complex
- ? Three robed bedrooms all with balcony access and WIR and ensuite to the main
- ? Two modern bathrooms, internal laundry and an open-plan living area
- ? Sleek kitchen with premium appliances, natural finishes

**Price** : \$1,080,000  
**Building Size** : 107 sqm  
**View** : <https://www.gwh-re.com.au/sale/nsw/newcastle-region/newcastle/residential/apartment/7048017>

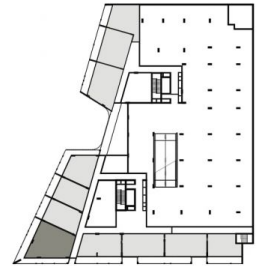


**GWH/RE Sales**  
**02 4966 3766**

# one

## Apartment S.0205

3 2 2  
Internal area: 106.5 m<sup>2</sup>  
Terrace area: 49.0 m<sup>2</sup>



This drawing and the information shown herein is the property of GWH Real Estate and is to be used for the purpose of providing information only. It is not to be used for any other purpose without the written consent of GWH Real Estate.

86 Lonsdale Street  
Melbourne VIC 3000  
PO Box 752  
Hornsea

Nat. CR #164 3766  
VIC. CR #164 3966  
ABN: 55 150 850 312  
gwh.com.au

